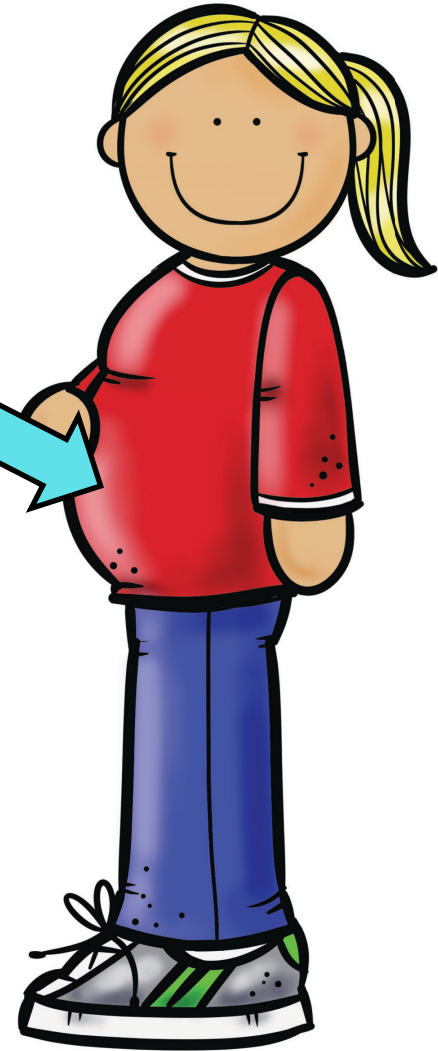
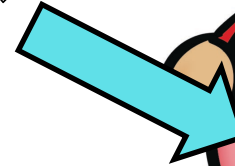


# My mom is having a baby



BABY!

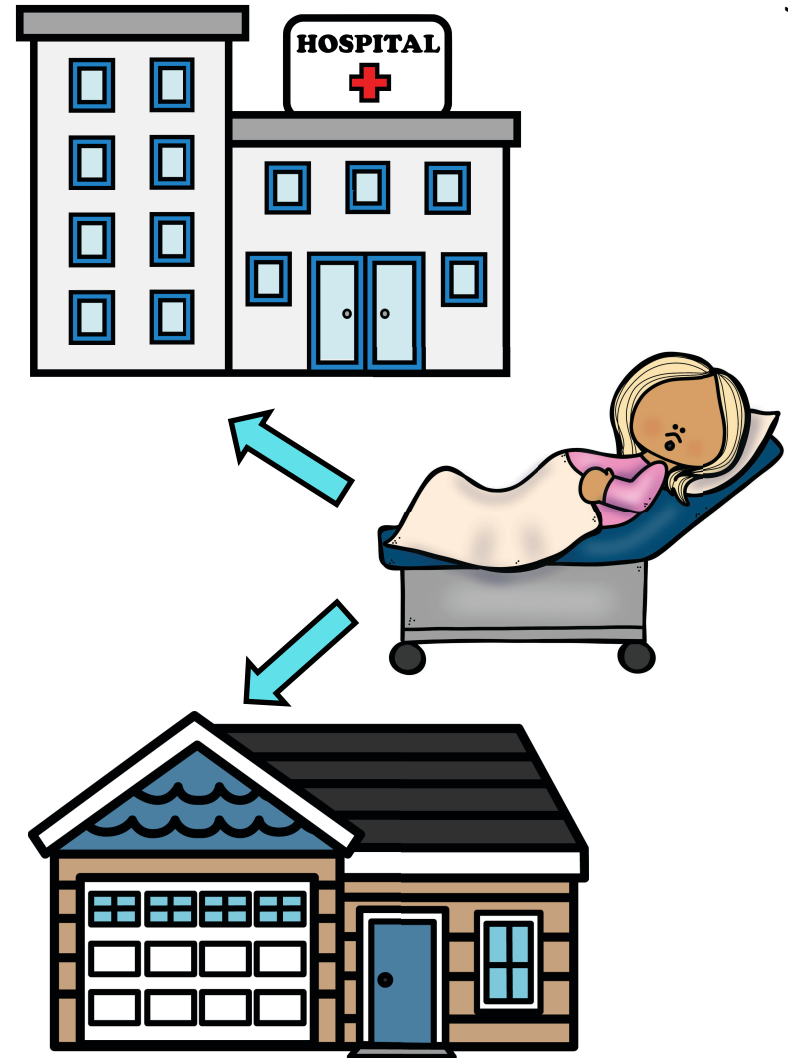


My mom is going to have a  
baby. The baby is in her tummy.

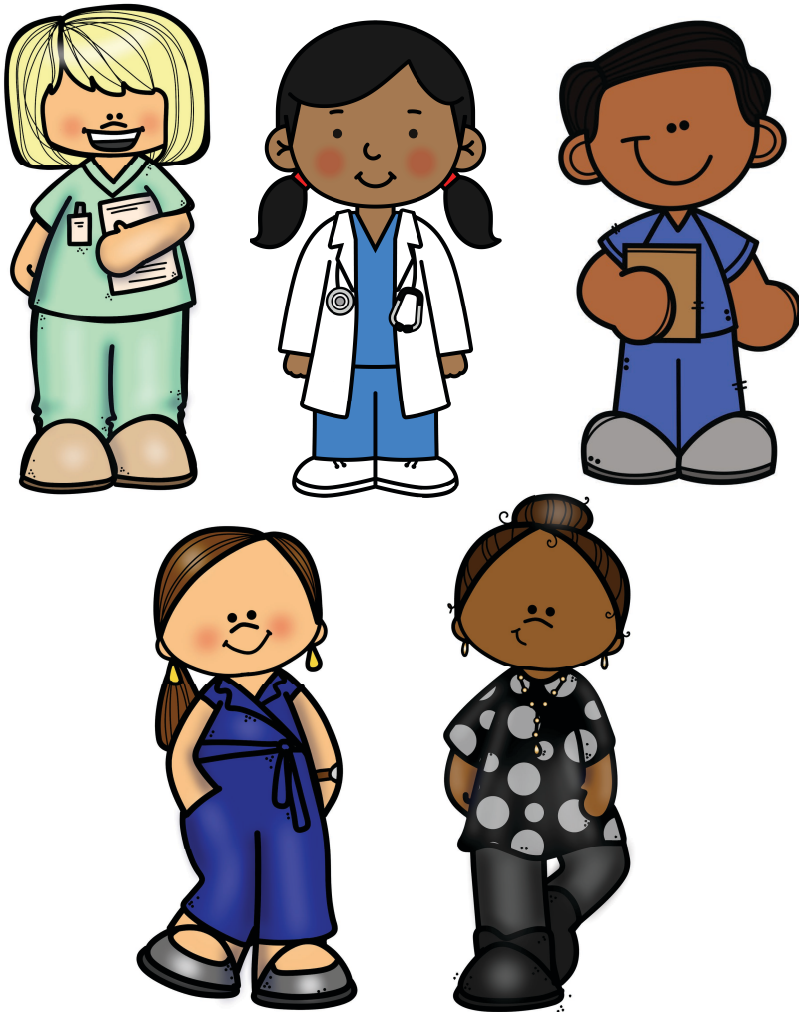
# 9 MONTHS



Babies stay in the mama's tummy for about 9 months. Sometimes they come out early.



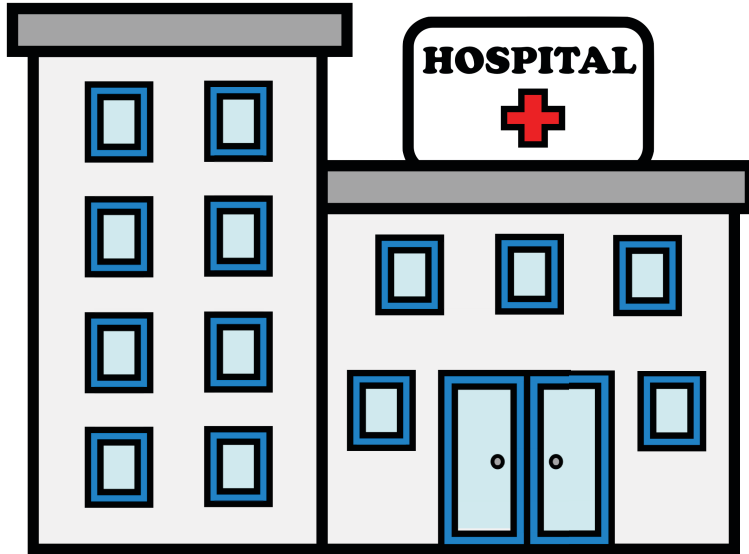
Some babies are born in the hospital & some are born at home.



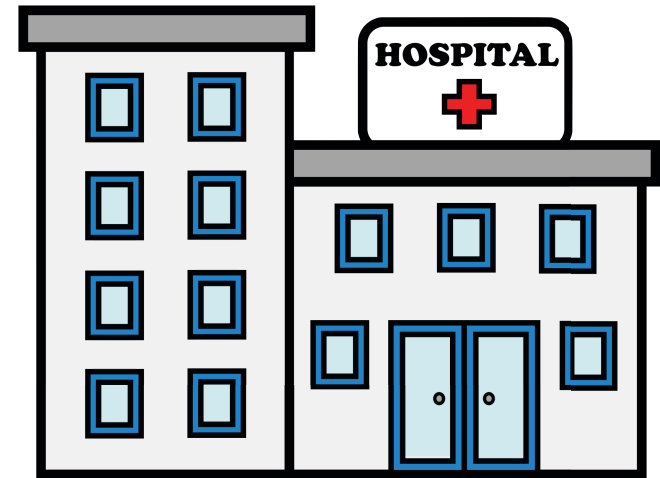
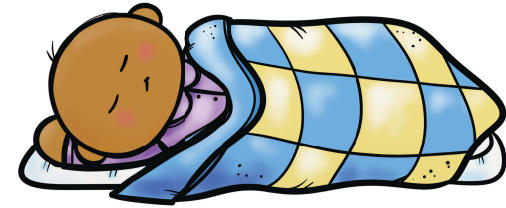
Sometimes a doctor helps the baby come out and sometimes a nurse or midwife helps.



Some families don't go to the hospital at all. They have their baby at home and stay home after the baby is born.



Other families have their baby at the hospital. Most of the time the mom and baby come home in a couple of days.



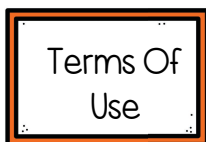
Sometimes the baby needs a little extra time at the hospital. My mom might come home, but the baby will stay at the hospital.



My family will tell me when it is  
time for the baby to come home!



It is very important to be gentle  
around the new baby. Babies are  
very little and need a lot of love!  
I will be a great sibling!



Terms Of  
Use



# AUTISM *little* LEARNERS

Resources and ideas for families *and* educators

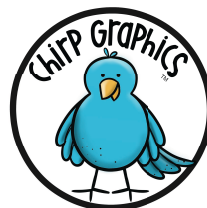
This product is free, and I give you permission to distribute, copy and use as you wish. Please give credit to Autism Little Learners or Tara Tuchel and refer people to my website: [www.autismlittlelearners.com](http://www.autismlittlelearners.com). Do not post or distribute as your own.

AUTISM *little* LEARNERS

WEBSITE/BLOG



Instagram



Thank you for purchasing this activity from my store! I hope you find these materials as useful as I have in my classroom. Be sure to come back for newly added products!

♥ **taraTUCHEL**

Speech/Language Pathologist

